



7H010723 DE-SU 527 SPUR-ET *TR *TV *TL *TY *TD

USA 000066636663

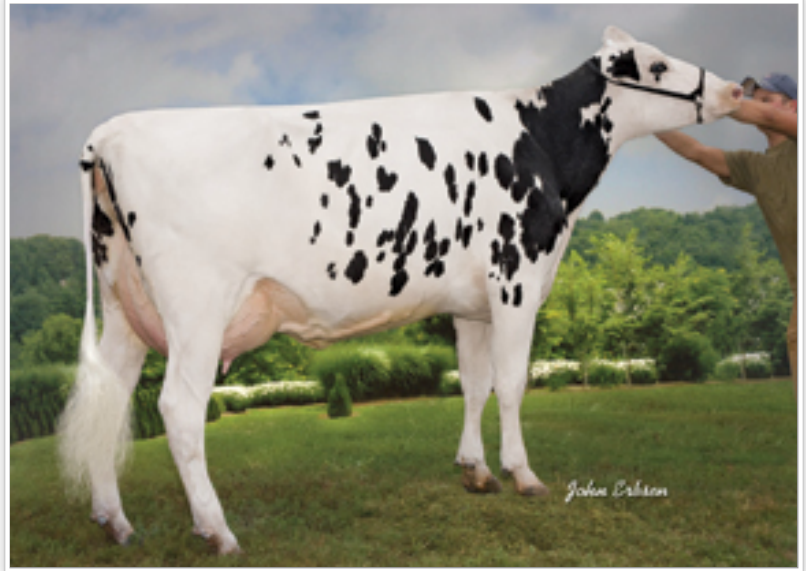
PLANET X SHOTTLE X O MAN
100% Registered Holstein Ancestry



SPUR



GDAM De-Su Oman 6125-ET



DAM De-Su 7012-ET

Production		Type	Management Traits	
TPI	2294	PTA Type	3.23	SCE / Re1.% 7/89
NM\$	668	Udder Composite	2.67	DCE / Re1.% 6/63
PTA Milk (lbs)	2227	Feet & Leg Composite	1.56	SSB / Re1.% 8/71
PTA Protein (lbs)	59	Body Composite	2.41	DSB / Re1.% 5.4/55
PTA Protein (%)	-0.03	Dairy Composite	2.30	SCS 2.78
PTA Fat (lbs)	59	Type Reliability %	77	Productive Life 5.4
PTA Fat (%)	-0.08	Dtrs / Herds	0/0	DPR / Re1.% -0.8/72
Production Reliability %	77	aAa	234	SCR / Re1 % 1.6/94
Dtrs / Herds	0/0			Milking Speed
				Disposition

		-2	-1	0	1	2	
Stature	Short					2.71	Tall
Strength	Frail					2.18	Strong
Body Depth	Shallow					1.93	Deep
Dairy Form	Tight Ribbed					1.67	Open Ribbed
Rump (side view)	High Pins					0.23	Sloped
Rump Width	Narrow					2.18	Wide
Rear Leg (side view)	Posty					0.46	Sickled
Rear Leg (rear view)	Hock-in					1.57	Straight
Foot Angle	Low Angle					1.65	Steep Angle
Feet & Leg Score	Low					1.82	High
Fore Udder	Loose					3.22	Strong
Rear Udder Height	Low					3.49	High
Rear Udder Width	Narrow					3.16	Wide
Udder Cleft	Weak					2.44	Strong
Udder Depth	Deep					2.68	Shallow
Front Teat Placement	Wide					2.18	Close
Rear Teat Placement	Wide					1.76	Close
Teat Length	Short					-0.27	Long

Information for August 2012, provided by the following:
Production: USDA-Genomic, Type: USDA/HA Genomic
Service Sire Calving Ease: USA, Daughter Calving Ease: USA